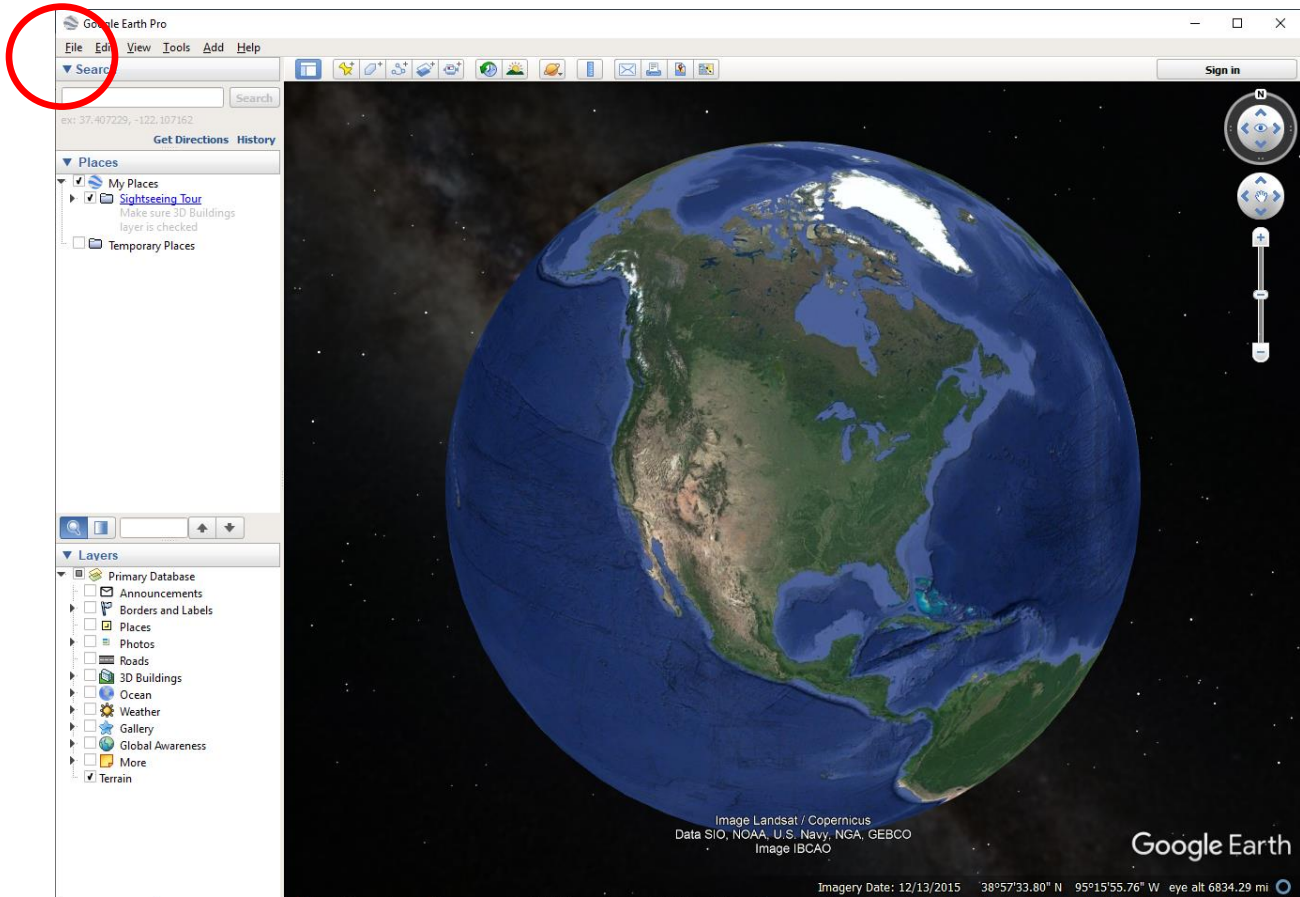


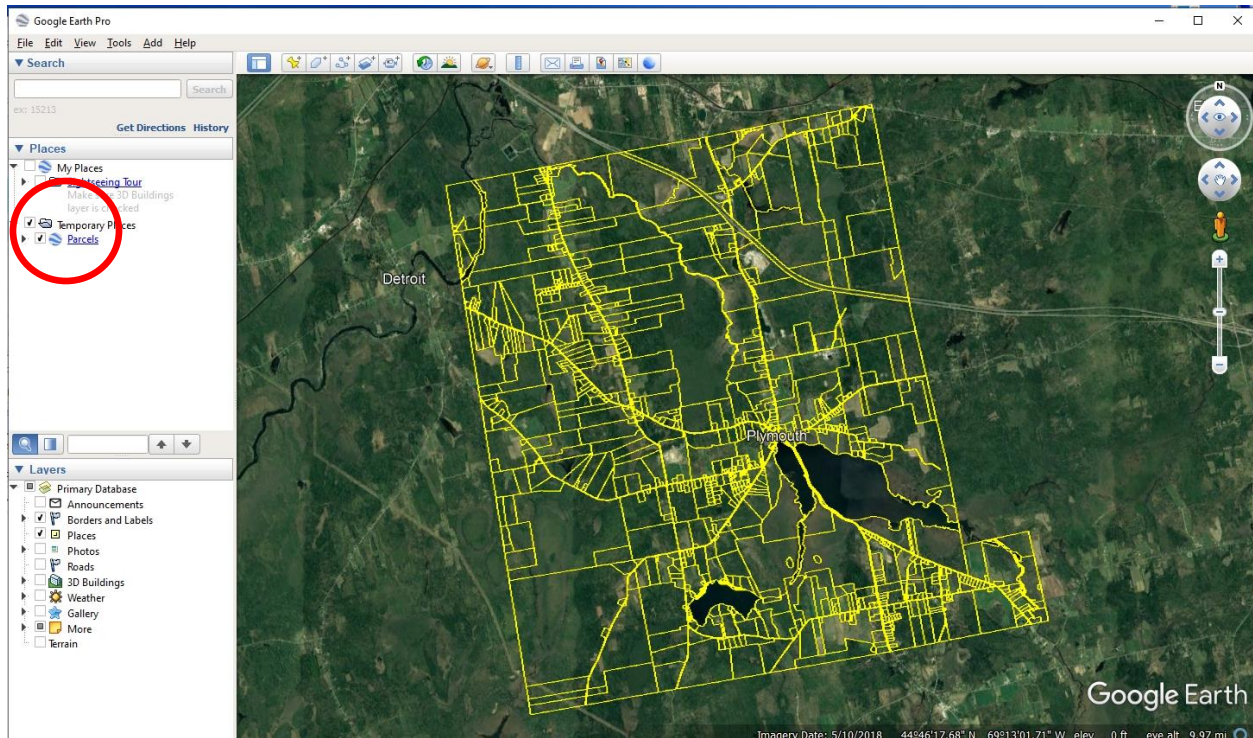
Google Earth Quick Start Guide

Google Earth Pro is a free map viewer application which can be used to access, view and interact with online and local GIS content. The program can be downloaded from <https://www.google.com/earth/versions/>.

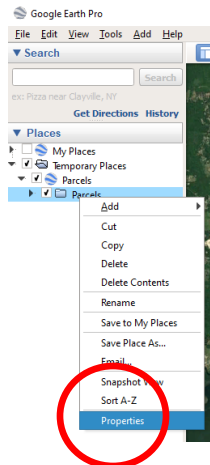
You can either double-click on the KMZ file provided to open within Google Earth or if you already have Google Earth open, click on *File >> Open*, navigate to where the file is located, highlight the KMZ file and click the *Open* button.

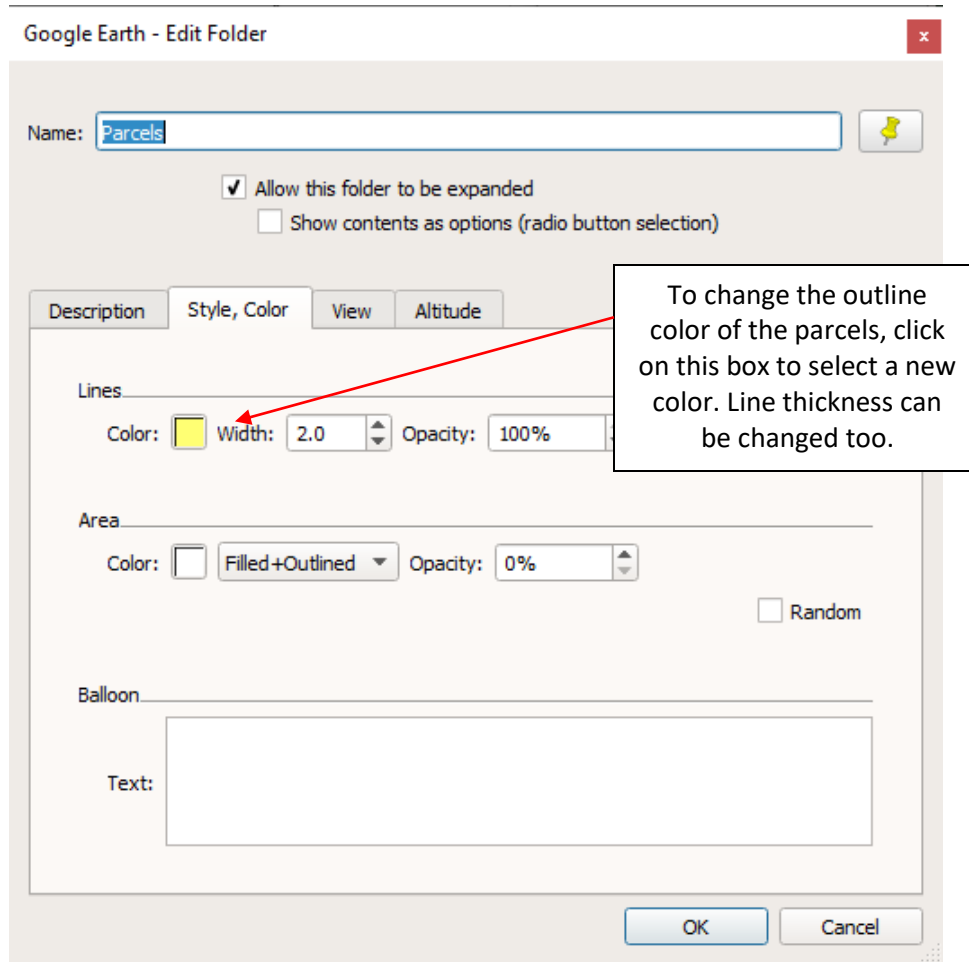


After the file is imported, Google Earth will zoom to the file's area of extent. Initially you will see the lines appear in yellow (or whatever color it was exported out of ArcGIS) and you will see the name of the KMZ file in the table of contents under "Temporary Places".

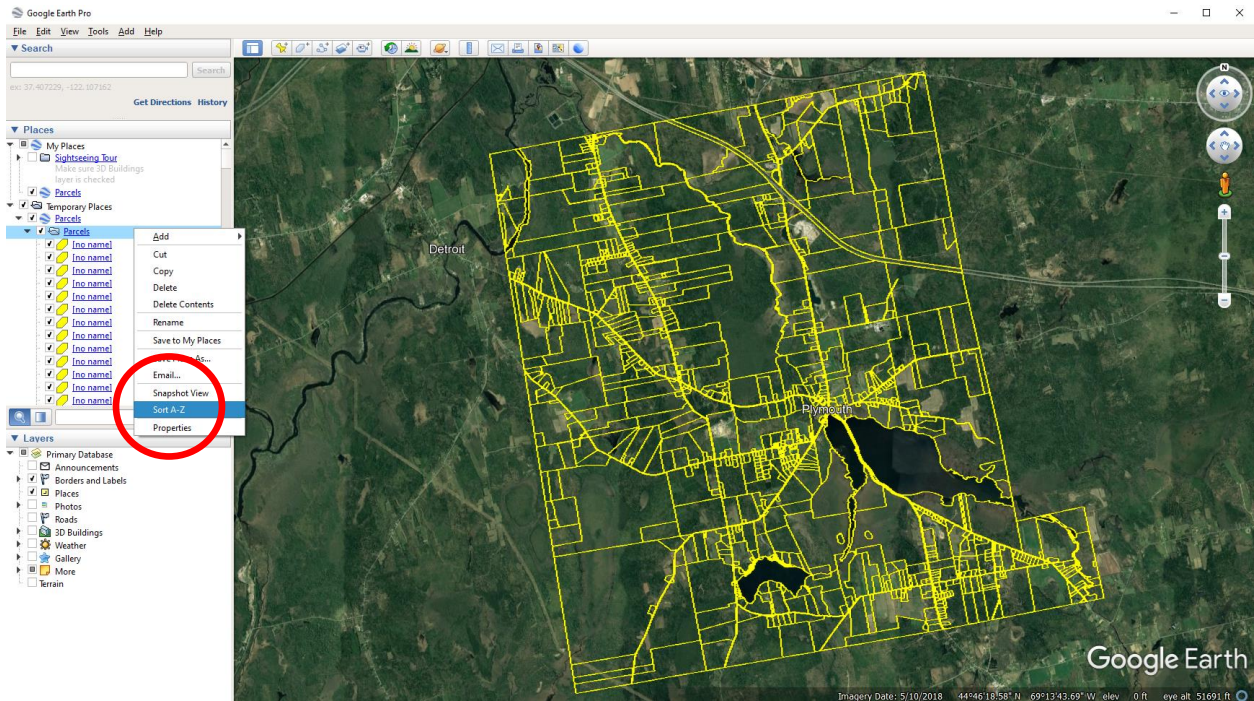


If you wish to change the color, right click on the KMZ layer and select **Properties**. In the *Edit Folder* window that appears, click on the *Style, Color* tab. In the *Lines* section, click on the box next to Color and choose a color from the *Choose Line Color* window that appears. Hit the **OK** button after making your choice. Hit the **OK** button in the Edit Folder window to close it.

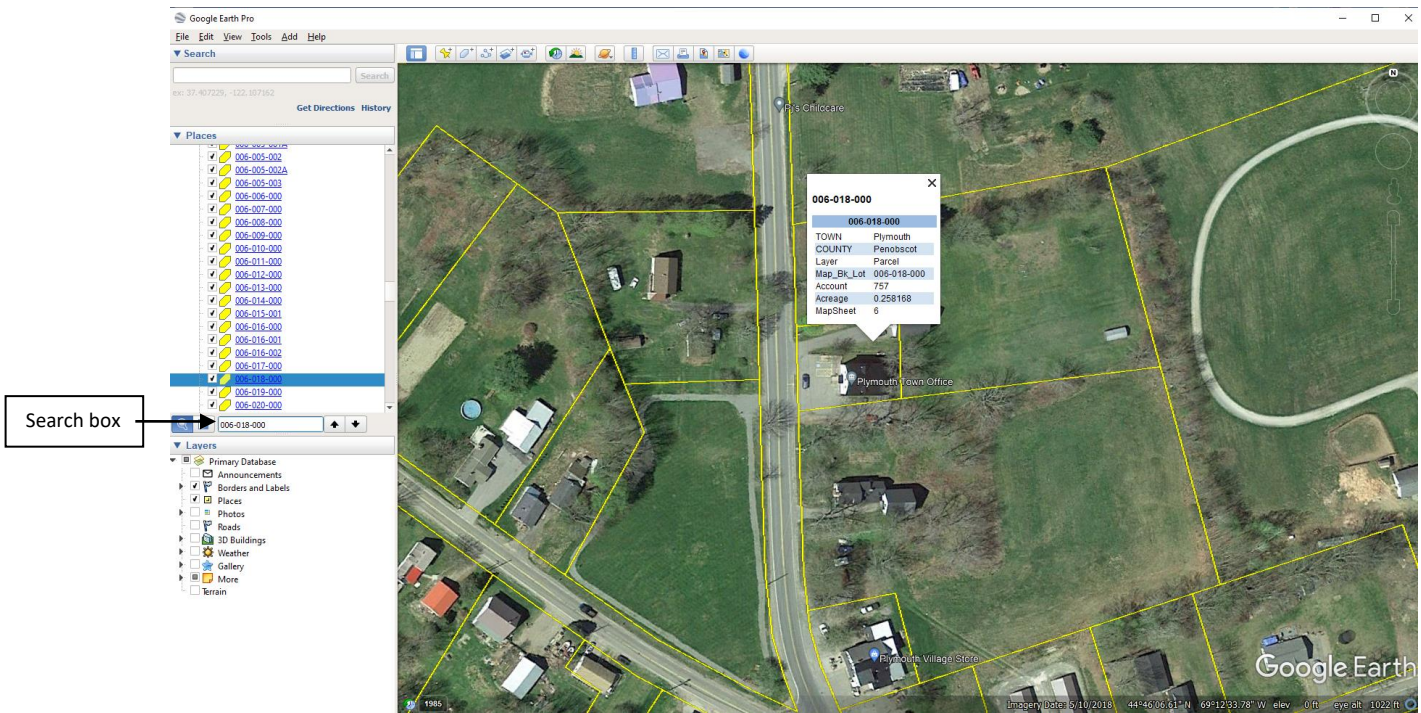




To search the parcels by Map-Lot-Bk, double-click on the parcels KMZ file to bring the subsections up. Right click on the subsection layer, select **Sort A-Z**. Slide the scroll bar down to see a listing of the map-lot numbers. The “No Names” are polygons that tend to be water, islands, ROWs, etc.



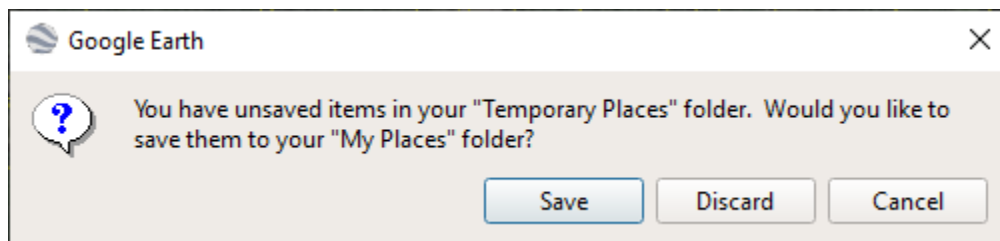
To zoom to a particular lot, double-click on the desired parcel from the list or type it out in the search box below the list. A pop-up window will appear to bring up some information about the parcel.



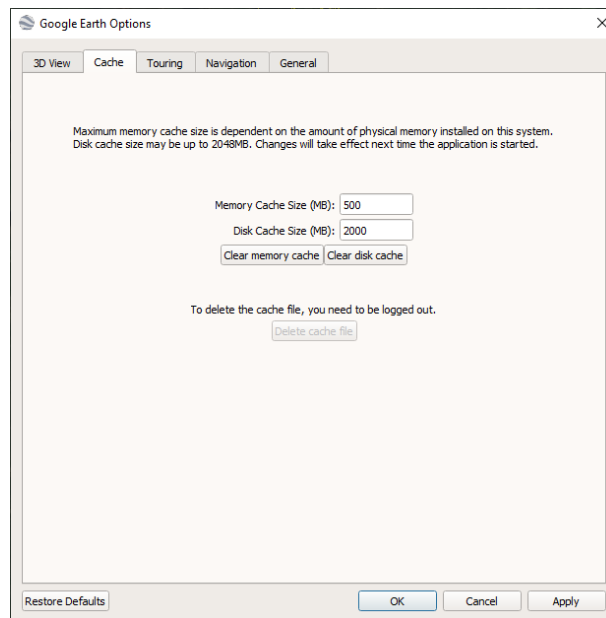
When viewing the data, you may see “double” lines. This seems to be an artifact of Google Earth because the lines are not seen within the GIS software. Often the extra lines disappear when you zoom in closer and move around. (Example not in Plymouth.)



To open up the project in the same location each time (i.e. to see the entire municipality), go to View >> Make this as my start location. When you exit out of Google Earth, choose “**Save**”.



If you have problems viewing the data within Google Earth, clear the Cache under the Tools >> Options >> Cache tab and select the Clear memory cache and Clear disk cache buttons. Hit the **OK** button to close the window.



Importing GIS data on mobile Google Earth is slightly different. Once the KMZ is downloaded on the mobile device, double click to open within Google Earth app. Once open, follow the same steps as above. After you close the app and restart the app, click on the “hamburger lines” in the top left corner of the app to bring up the menu. Click on the **Projects** option to bring up various KMZ files (if you have more than one) and click on the project to zoom in to that project location.