

TROY

PROPERTY MAPS
Tax Map
09

THORNDIKE
Waldo County, ME

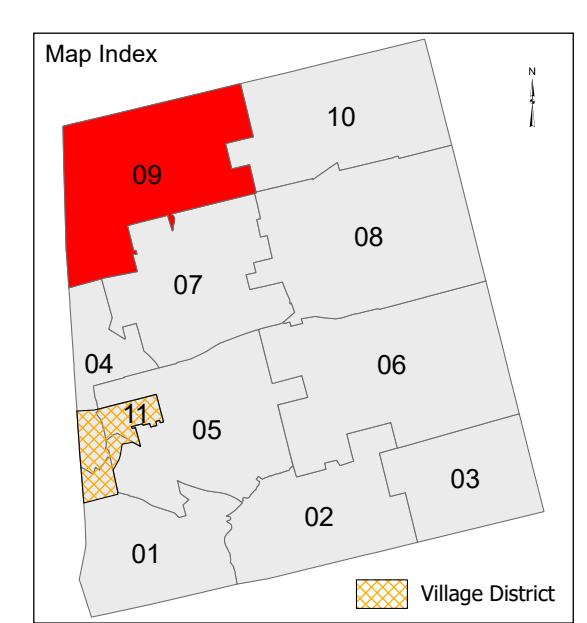
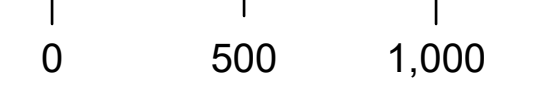


LEGEND

- PROPERTY LINE
- PUBLIC RIGHT-OF-WAY
- PRIVATE RIGHT-OF-WAY
- RAILROAD RIGHT-OF-WAY
- HISTORIC/SUBDIVISION LINE
- EASEMENT
- PARCEL HOOK
- 2-1** PARCEL ID NUMBER
- 1.25 AC ASSESSED ACREAGE
- 150' SURVEY DIMENSION (FEET)

The information on this map is for assessment purposes only, is not a legal survey, and is not intended to be used for conveyance.

SCALE: 1 in = 500 ft

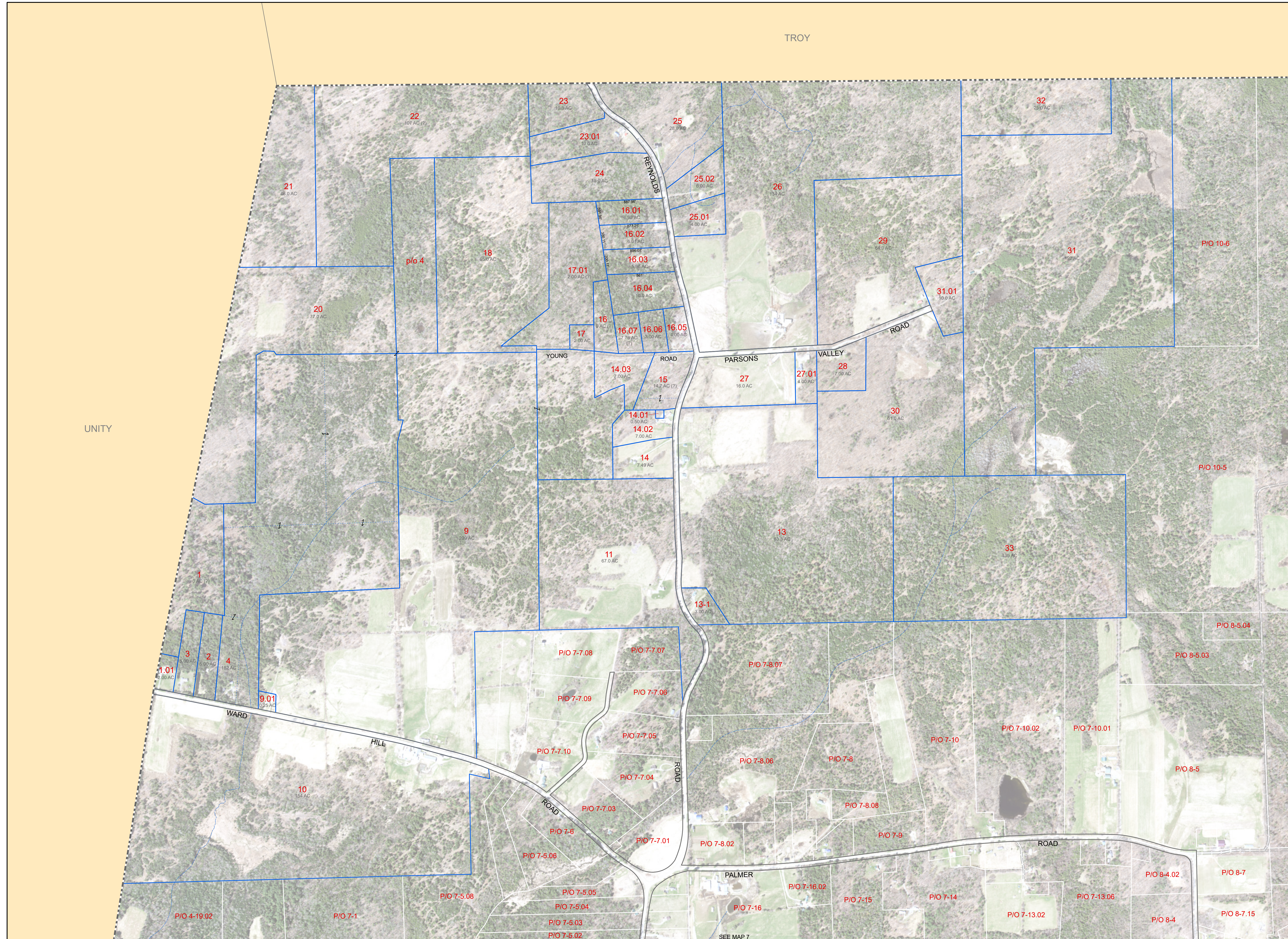


Aerial Layer Credits: MaineGeoLibrary (2022)

Map revisions made by 45 Degree North Cartographic and Corson GIS Solutions. Map updated by LatLong Logic, LLC. (April, 2023)

Print Date: 1/10/2024

Thorndike Assessor's Office
125 Mt. View Road
Thorndike, Maine 04986
(207) 568-3655



UNITY

SEE MAP 10

SEE MAP 8

SEE MAP 7